

REVIEW ARTICLES

ОБЗОРНЫЕ СТАТЬИ

ISSN 2686-7575 (Online)

<https://doi.org/10.32362/2410-6593-2019-14-5-7-20>



UDC 547.918

Structural features of synthetic glycoconjugates and efficiency of their interaction with glycoprotein receptors on the surface of hepatocytes

Anastasiya S. Nosova[@], Ulyana A. Budanova, Yury L. Sebyakin

MIREA – Russian Technological University (M.V. Lomonosov Institute of Fine Chemical Technologies), 119571 Moscow, Russia

[@]Corresponding author, e-mail: c-221@yandex.ru

Objectives. Over the last few years, medicinal chemistry research has been focusing on the creation of molecules that can target particular body systems, organs and tissues, thus abating systemic toxicity and side effects, and, most of all, boosting therapeutic potential. This goal can be achieved through the specific interaction of such drugs with active sites of cellular receptors. For example, glycoprotein receptors that can be found on cellular surfaces in neural tissues and liver parenchyma, selectively bind various glycoproteins and glycosides, facilitating their penetration into cells. This review describes how certain parameters of ligand structure (the nature and length of the spacer between carbohydrate and non-carbohydrate fragments of the molecule, number of carbohydrate residues per molecule, etc.) influence the penetration efficiency of synthetic glycoconjugates into liver cells.

Methods. This review article summarizes 75 research papers and discusses data from in vitro and in vivo experiments showing which structures of synthetic carbohydrate derivatives are optimal for targeted drug delivery into liver cells.

Results. The surface of liver cells (hepatocytes) contains a significant number of asialoglycoprotein receptors (ASGP-R) that are almost never found elsewhere. This makes ASGP-R an ideal target for the directed treatment of liver diseases, including such difficult, socially important conditions as hepatocellular carcinoma and Hepatitis C. A number of various ligands and targeted (to ASGP-R) delivery systems have been designed. Such molecules always contain derivatives of mono- and disaccharides, most commonly D-glucose, D-galactose, D-lactose and N-acetylglucosamines. This review contains the chemical structures of carbohydrate-based ligands.

Conclusions. Glycolipids based on D-carbohydrates, when in liposomes, facilitate penetration into liver cells by a receptor-mediated, clathrin-dependent endocytosis mechanism that is activated upon contact of the carbohydrate-containing ligand fragment with the active site of ASGP-R. It can be addressed by the use of monovalent derivatives of carbohydrates as well as polyvalent glycoconjugates. Alterations in the ligand structure and the number of liposomal modifications can boost the therapeutic effect. The distance between the liposomal surface and the carbohydrate residue (spacer length), as well as the hydrophilic-lipophilic balance of the ligand molecule, have a great effect on the affinity and cellular response.

Ключевые слова: glycoconjugates, asialoglycoprotein receptor, receptor-mediated endocytosis, targeted delivery, liver cells.

For citation: Nosova A.S., Budanova U.A., Sebyakin Yu.L. Structural features of synthetic glycoconjugates and efficiency of their interaction with glycoprotein receptors on the surface of hepatocytes. *Tonkie Khim. Tekhnol.* = *Fine Chem. Technol.* 2019;14(5):7-20 (in Russ.). <https://doi.org/10.32362/2410-6593-2019-14-5-7-20>

Структурные особенности синтетических гликоконъюгатов и эффективность их взаимодействия с гликопротеиновыми рецепторами на поверхности гепатоцитов

А.С. Носова[@], У.А. Буданова, Ю.Л. Себякин

МИРЭА – Российский технологический университет (Институт тонких химических технологий имени М.В. Ломоносова), 119571 Москва, Россия

[@]Corresponding author, e-mail: c-221@yandex.ru

Цели. Последние несколько лет исследования в области медицинской химии уделяют большое внимание созданию молекул, направленно воздействующих на конкретные системы организма человека, органы и ткани, что помогает снизить общее токсическое воздействие препаратов на их основе, уменьшить степень проявления побочных эффектов, а самое главное – многократно усилить их терапевтический эффект. Это может быть достигнуто при помощи специфического взаимодействия подобных веществ с активными центрами клеточных рецепторов. Например, класс гликопротеиновых рецепторов, располагающихся на поверхности клеток нервной ткани и паренхимы печени, селективно связывает различные гликопротеины и гликозиды, способствуя их проникновению внутрь клеток. В обзоре рассмотрено влияние таких особенностей структуры лигандов, как природа и длина связующего звена (спейсера) между углеводной и неуглеводной частями молекулы, количество углеводных остатков в составе одной молекулы, а также ряда других, на эффективность проникновения синтетических гликоконъюгатов в клетки печени.

Методы. В обзоре проанализировано 75 публикаций и обобщены результаты исследований, в которых с помощью *in vitro* и *in vivo* экспериментов устанавливается, какая структура искусственно синтезированных производных углеводов окажется наиболее оптимальной для направленной доставки лекарственных средств в клетки печени.

Результаты. На поверхности гепатоцитов (клеток печени) в большом количестве представлен асиалогликопротеиновый рецептор (ASGP-R), который почти не встречается на других типах клеток, что делает его идеальным рецептором-мишенью для направленного лечения заболеваний печени, в том числе таких трудно излечимых социально значимых заболеваний, как гепатоцеллюлярная карцинома и гепатит С. Разработан ряд разнообразных лигандов и систем направленной доставки к ASGP-R. Такие молекулы обязательно имеют в составе производные моно- и дисахаридов, чаще всего применяются D-глюкоза, D-галактоза, D-лактоза и N-ацетилглюкозамин. В обзоре приводятся примеры химических структур углеводсодержащих лигандов.

Заключение. Гликолипиды на основе D-углеводов в составе липосом обеспечивают их проникновение в клетки печени по механизму рецептор-опосредованного клатрин-зависимого эндоцитоза, который активируется при контакте углеводсодержащей части лиганда с активным центром ASGP-R. Показано, что для этого можно использовать как моновалентные производные углеводов, так и поливалентные гликоконъюгаты. Варьируя структуру лиганда и количество добавляемых к липосоме модификаций, можно достичь наибольшего терапевтического эффекта. Большое влияние на аффинность и клеточный ответ оказывают расстояние от поверхности липосомы до углеводного остатка (длина спейсера) и гидрофильно-липофильный баланс молекулы лиганда.

Keywords: гликоконъюгаты, асиалогликопротеиновый рецептор, рецептор-опосредованный эндоцитоз, направленная доставка, клетки печени.

Для цитирования: Носова А.С., Буданова У.А., Себякин Ю.Л. Структурные особенности синтетических гликоконъюгатов и эффективность их взаимодействия с гликопротеиновыми рецепторами на поверхности гепатоцитов. Тонкие химические технологии. 2019;14(5):7-20. <https://doi.org/10.32362/2410-6593-2019-14-5-7-20>

Novel pharmaceutical approaches in the design and development of medications are expected to lead to a rise in revolutionary drugs with high bioavailability, biocompatibility and efficacy, and low toxicity. One of the ways to solve the existing difficulties in drug design is the creation of nanoparticles that carry low yet efficient doses of medication. The great variety of nanosized delivery systems allows us to design therapeutic complexes with the required characteristics. A number of *in vitro* and *in vivo* studies have shown that liposomes (lipid vesicles with a two-layer membrane) possess all the necessary features to deliver any type of medication.

The liver's role in the metabolism of toxic substances implies that its cells (hepatocytes) are often affected by drugs, microbes and toxic molecules, which may lead to a number of liver diseases. Such diseases are the fifth most common cause of death. Hepatocellular carcinoma (HCC) is the fifth most common neoplasm in the world, and the third most deadly type of cancer [1, 2]. HCC development is driven by two major types of the hepatitis virus, Hepatitis B and Hepatitis C (HBV and HCV, respectively). Approximately 2 billion people across the world are infected by HBV and 320 000 cases are fatal every year [3], whereas 170 million people in the world are infected by HCV [4, 5]. Since HCC and other liver diseases, such as fibrosis and cirrhosis, mainly affect hepatocytes [6], the targeted delivery of therapeutics directly to these cells seems to be a most logical approach. In order to develop a hepatocyte-targeted delivery system, an asialoglycoprotein receptor (ASGP-R) [7] was selected as a target receptor. It is often found on the surface of hepatocytes but not as much on the membranes of other cells.

Today, research is focusing on the establishment of optimal glycolipid structures that will give liposomes "targeting" features. Several systems of gene delivery that are based on such ligands have shown exciting clinical results, attracting the attention of the scientific community and demonstrating the prospects of nanotherapeutics.

Structure and functions of the asialoglycoprotein receptor ASGP-R

ASGP-R, also known as the "Ashwell–Morell receptor," was the first mammalian cellular lectin discovered in the 1960s, during studies on the metabolism of plasma glycoproteins [8, 9]. The main function of this receptor is binding to cellular fibronectin, prothrombin components, liver lipoproteins and immunoglobulin A (IgA). The role of ASGP-R is to mediate the homeostasis of serum glycoproteins by balancing between binding to and the endocytosis of a wide range of glycoproteins that bear galactose residues or *N*-acetylgalactosamine at the termini [10]. These glycoproteins undergo endocytosis

through clathrin-presenting areas, after which they are transported into lysosomes for acidic degradation. ASGP-R is widely present on the surface of parenchymal liver cells, making up to $(1-5) \times 10^5$ of binding sites per cell [11]. Apart from this, the interaction of the receptor with cellular components of pathogens is a major reason for the generalization of certain liver diseases, particularly those caused by hepatitis viruses A and B, as well as the Marburg virus [12–15].

Mammalian ASGP-R consists of two homologous polypeptide subunits, main and auxiliary that are encoded by two genes [13, 16]. In humans, the main subunit H1 and the auxiliary subunit H2 are 46 and 50 kDa in size, respectively. Each subunit is a transmembrane C-type protein, with a short *N*-terminus in the cytoplasm; an internal part that runs throughout the membrane; and a C-terminus with a Ca^{2+} -dependent domain responsible for carbohydrate recognition, on the outer side of the membrane [17]. Combinations of different subunit ratios lead to functional homo- and heterooligomers with different receptor configurations. It has been established that the most common configuration is the conjugate of two H1 subunits and one H2 subunit (Fig. 1). This conjugate shows the highest affinity to the ASOR ligand (asialo-orosomucoid) that binds to ASGP-R, similarly to lactoferrin – serum glycoprotein [11, 18].

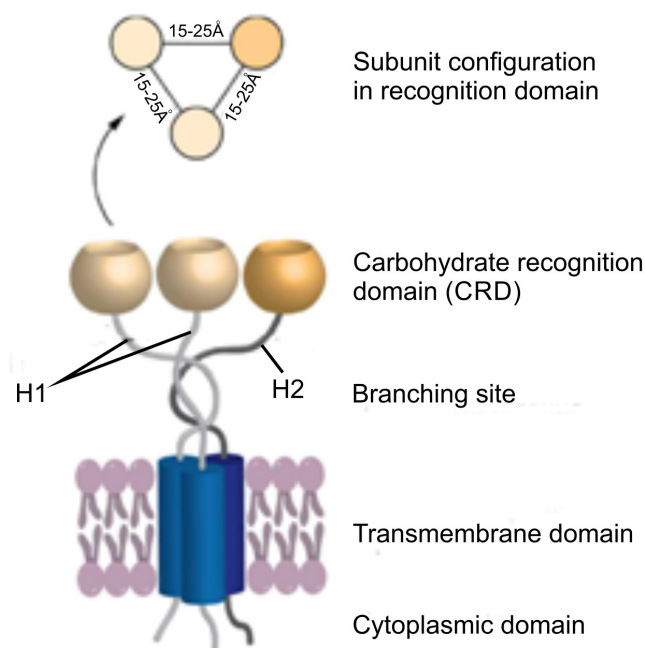


Fig. 1. Schematic depiction of ASGP-R that showing a heterooligomer made up of two H1 subunits and one H2 subunit. The figure shows the spatial arrangement of the receptor's binding sites [19].

The carbohydrate recognition domain (CRD) in ASGP-R subunits belongs to the C-type family (Ca^{2+} -dependent) [20]. The majority of CRD C-type domains selectively bind to D-mannose, D-glucose and their derivatives (Man-type ligands), or D-galactose and its derivatives (Gal-type ligands). The binding of D-galactose to the receptor (Fig. 2) occurs in the presence of Ca^{2+} ions under basic conditions [21–23].

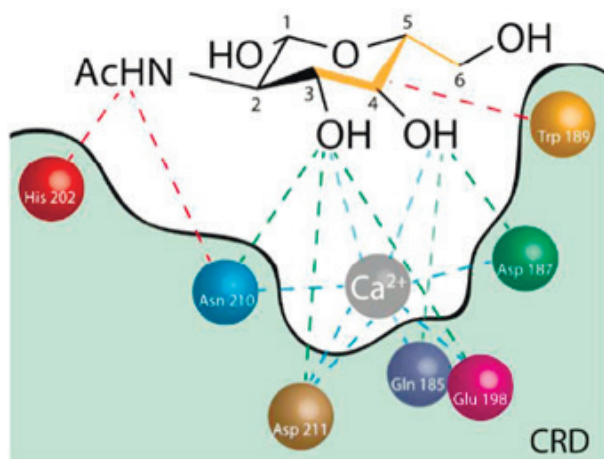


Fig. 2. Binding of the *N*-acetylgalactosamine (GalNAc) molecule to the recognition domain of ASGP-R.

Between hydroxyl groups at 3 and 4 carbon atoms in the pyranose ring of GalNAc and ¹⁸⁷Asp, ¹⁹⁸Glu, ¹⁸⁵Gln, ²¹¹Asp and ²¹⁰Asn amino acid residues, the interaction is due to hydrogen as well as coordination bonds (with the participation of the Ca^{2+} ion). The hydrogen atom in the amide bond and the nonpolar GalNAc region between 3 and 6 carbon atoms participate in the creation of hydrophobic interactions with ²⁰²His and ¹⁸⁹Trp amino acid residues, respectively [19].

ASGP-R facilitates clathrin-mediated endocytosis [24]. This mechanism is used upon interaction with a transmembrane receptor that activates a signaling cascade and lets the particles through. Clathrin domains occupy only 0.5–2% of the total cell surface area, meaning that substance transport by a clathrin-mediated mechanism is quite selective. For successful recognition, liposomes and other substances should be first labelled by apolipoproteins that are commonly found in plasma [25]. After entering the cell, this aggregate is found inside an early endosome whose membrane later fuses with the outer layer of the liposome, maturing to form a late endosome. Depending on the structure of the parental liposome, its charge and presence/absence of specific ligands on the surface, the late endosome can either become a lysosome (upon enzymatic action) leading to the degradation of the whole complex, or its contents can be released into the cytoplasm where they can affect the organoids [26, 27]. Research on

the mechanisms of endocytosis and ways of blocking it has shown that penetration of the cells does not occur at 4 °C, but the process of molecule recognition by receptors remains the same [28]. This is why it is possible to determine whether the transport is receptor-dependent and selective while using low temperatures for studying mechanisms of penetration for certain liposome structures. It has also been demonstrated that the human Hepatitis C virus enters hepatocytes via this mechanism [29].

ASGP-R has also been found on the surface of hepatocytes in other mammals, including rabbits [30], mice [31], and rats [32], although the size and number of subunits differ slightly between species. Despite the differences in receptor structure in various mammals, the amino acid sequence is rather conservative and, potentially, originates from the same common gene. For example, the H1 subunit is 80% identical to the rat lectin-1 (RHL1), and the H2 subunit is 62% identical to the RHL2 [33]. This fact allows us to project the *in vivo* experimental data on to the expected results of clinical studies.

Principles of targeted drug delivery to liver cells

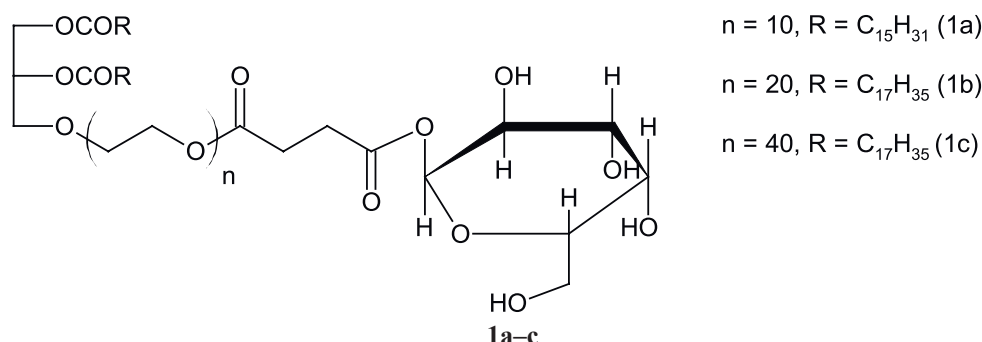
It is known that in chemotherapy more than 90% of molecules of cytotoxic agents are captured by healthy tissues and only 2–5% reach tumors [34]. This is why it is so important to create drug delivery systems that could be selective and would only reach target organs [35, 36]. Receptor-mediated endocytosis is a very promising approach for targeted drug delivery because it allows high drug concentrations in target cells to be reached, thus boosting efficacy and decreasing side effects.

Optimizing the ligand–receptor interaction has demonstrated that affinity is affected by a number of properties of the carbohydrate ligand. For example, it is known that the recognition domain binds cyclic D-galactose derivatives and acyclic D-galactosides equally well. The most efficient interaction with the receptor is observed for derivatives of D-galactose and D-glucose; lactose and D-mannose are less effective for hepatocytes, but they have a higher affinity for the receptors of Kupffer cells [37]. Affinity of D-galactose increases by 100–1000 times when the number of carbohydrate residues at the terminus of one ligand molecule grows from 1 to 3–4, due to the cluster effect [38]. To this end, monovalent and polyvalent ligands can be used to target ASGP-R.

The distance between the carbohydrate residue and the liposome surface is a crucial parameter for interaction with lectins [39, 40]. Construct design should take into account the minimal distance between

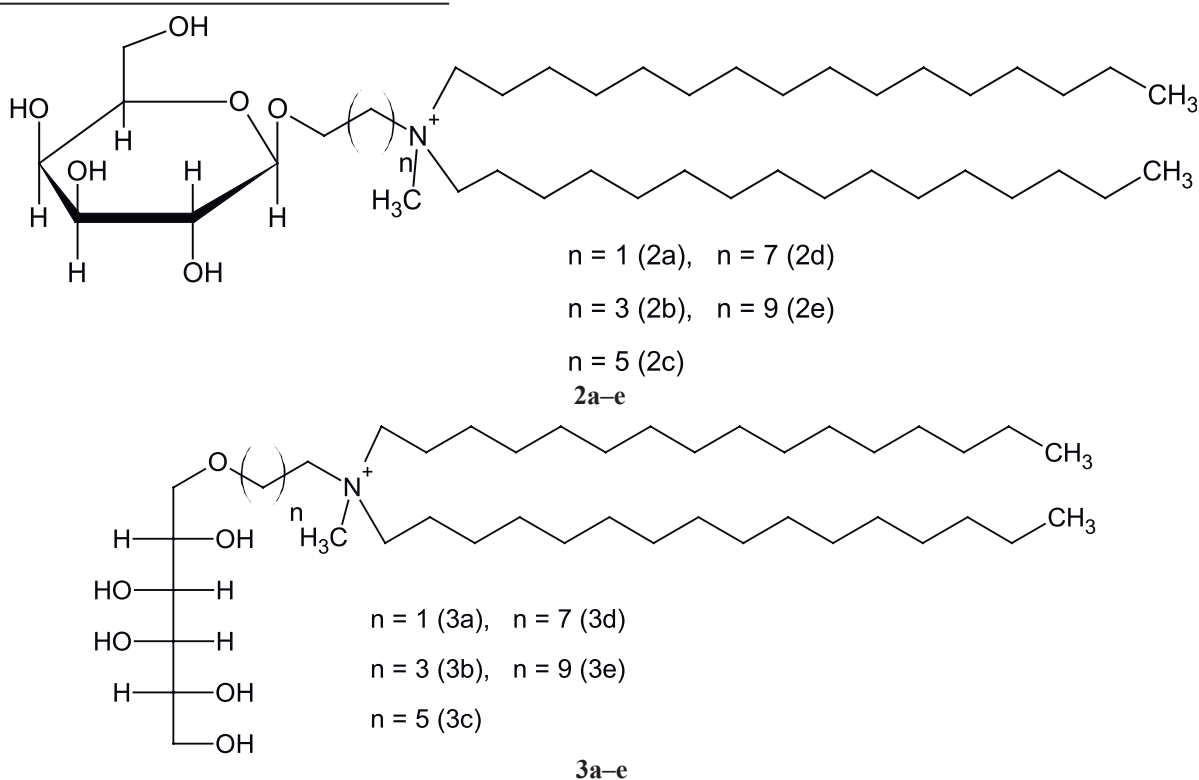
the carbohydrate and the surface of the carrier [41, 42]. If there is no hydrophobic spacer, carbohydrate residues are not exposed to the aqueous medium enough to bind to the active sites of receptors [43], but

a spacer that is too long can prevent their interaction [44]. This effect has been observed in the binding studies of glycolipids **1a–c** with ConA (carbohydrate-binding protein extracted from vegetables) in the presence of glycogen [45].



Theoretical calculations and experimental data have confirmed that a long spacer makes the carbohydrate residue more mobile (glycolipid **1c**), providing easier access to the binding site of the receptor protein. For example, D-galactosides with a 20 Å long spacer bind to the receptor even at low concentrations, whereas a 4 Å long spacer requires more active molecules [45]. Similar results have been obtained in experimental attempts to lower serum cholesterol: the effective dose of glycosides with a 20 Å long spacer is 30 times lower than that for compounds with a 4 Å long spacer [46]. For the spontaneous binding of carbohydrate residue to the receptor, the spacer length should be 25–30 Å on average, and if the carbohydrate residue is cyclic, a slightly longer distance to the nanoparticle surface is

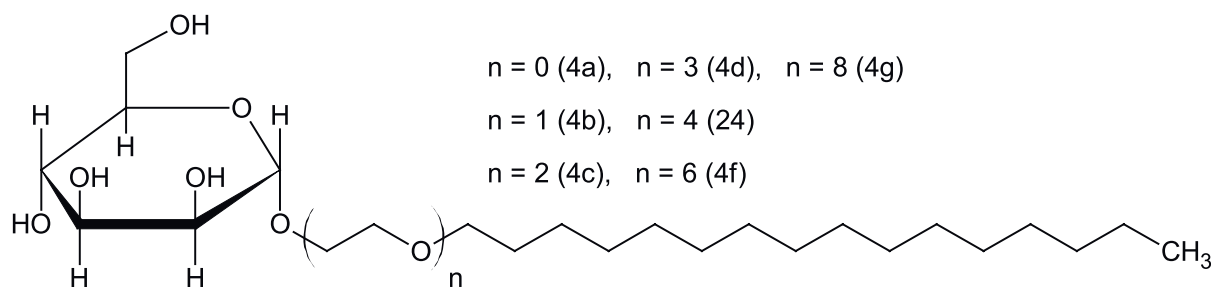
required [47]. At the same time, there are successful examples of shorter spacers, which are 15 Å [38], 11.05 Å [48], and 10.1 Å long [49]. It seems that there is no universal, ideal spacer length for all types of carbohydrate ligands, and this length depends on the spacer's nature and the type of carbohydrate residue. Studies on transfection activity of lipoplexes, which are based on aliphatic glycosides that contain a quaternary nitrogen atom, have shown that the cyclic form requires a spacer that is 6 methylene units long (**2a–e**), and the acyclic form requires only 2 methylene units (**3a–e**) [50]. It has also been shown that pyranosides, which have a glycosidic bond at the C-6 atom out of plane, enter hepatocytes while “skipping” the lysosome stage, thus improving the drug's therapeutic effect [51].



The effect of the configuration of the chirality center of the carbohydrate fragment has also been investigated; some studies show that α -glycosides have a higher activity towards the model plant receptor ConA [52] or cell line HepG2 derived from hepatocytes [53], in comparison with β -glycosides.

In addition, the use of liposomes as carriers requires

a minimal effective share of carbohydrate ligands in the total lipid content; it is called the threshold effect [54]. *In vitro* data for the binding of D-mannose modified liposomes (**4a–g**) to the plant lectin ConA demonstrate that the minimal effective share of D-mannose is 28% for short spacers (2 oxyethylene units), whereas it is only 3% for a medium-long spacer (6 units).



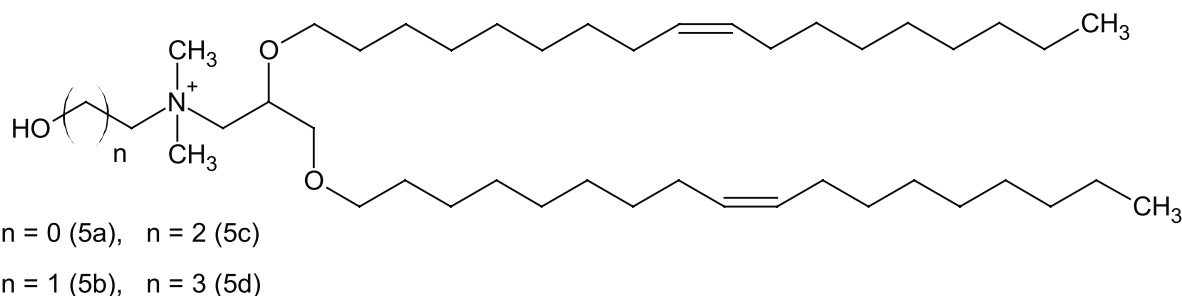
4a–g

In the case of D-lactose based glycolipids with a hydrophobic unit that contains two alkyl chains and a succinic acid residue acting as a small linker, the threshold effect is observed upon addition of 5% of the resulting substance to the liposome composition [55]. In addition, there is evidence of a sharp increase in the uptake of carbohydrate-containing particles by macrophages after interaction with Gal/Fuc-recognizing receptors on their surfaces, if the modification rate reaches 50% [56]. The introduction of structuring lipids, such as cholesterol, into the liposomes decreases the carbohydrate threshold, and the use of unsaturated phosphatidylcholines as a lipid matrix increases it [57].

It is worth noting that oxyethylene groups, which are not found in nature, are able to replace natural monosaccharide residues, imitating a long polysaccharide chain. This effect has been established in studies on binding efficiency for three different glycolipids with the plant lectin RCA1 – binding efficiency increased in a series of aliphatic derivatives of D-galactose, D-lactose, and D-galactose, with a short

hydroxyethylene spacer attached to it [43]. In addition, the use of longer polyethylene glycol chains (more than 10 units) creates the effect of steric surface protection of liposomes from blood proteins, leading to prolonged blood circulation of the complexes. An increase in ligand content in the lipid composition results in easier penetration into liver cells, and the presence of a long hydrophilic spacer slows down the removal of the complexes from the blood [44].

Hydroxyl groups at the terminus of a carbohydrate-containing ligand may facilitate the contacts between the modified liposome and the active site of ASGP-R, as well as improve the transfection activity of the complexes of such vesicles with nucleic acids. A number of *in vitro* studies on cationic liposome bioactivity, where the polar head of the lipid contains a hydroxyl group (**5a–d**), have shown that complexes formed with DNA are more stable, due to the formation of hydrogen bonds between the surface of the bilayer and the molecules of the nucleic acid [58]. The closer these groups are to the positively charged quaternary nitrogen atom (**5a**), the more effective complex formation is [59].



5a–d

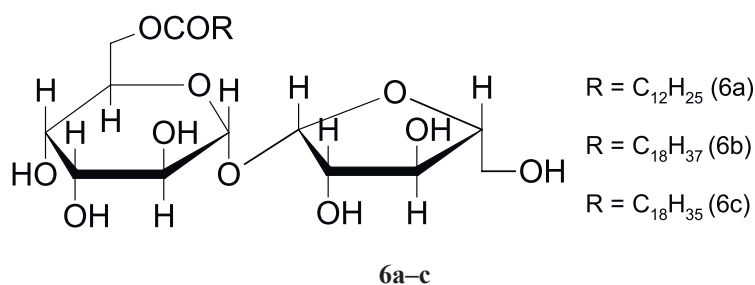
An increase in the number of hydroxyl groups in cationic lipids also improves transfection efficiency [60]. Hydroxyl groups at lipid termini within the bilayer perform a function that is analogous to that of PEG (polyethylene glycole) chains, forming a small protective layer around the liposome, thus letting the glycoside-containing particles further circulate in the blood, in comparison with cationic dispersions [50].

In summary, the crucial parameters in the design of such ligands are spacer length, hydrophilic-lipophilic balance of the molecule, and its spatial geometry.

Success in developing liposomal medications for liver disease therapies

Cationic liposomes that contain analogs of natural lipids may have much higher efficacy of gene delivery, compared to liposomes based on phospholipids, thanks to their particular bilayer structure [61]. However, such conjugates require the presence of

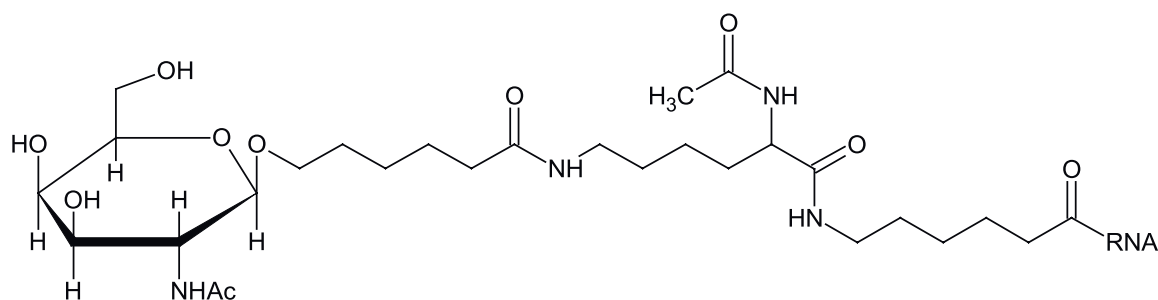
helper lipids that play an important role in lipoplex formation from cationic liposomes and nucleic acids, and determine their morphology [62]. One study suggests aliphatic esters of saccharose as helper lipids, where the hydrophobic domain is represented by residues of various fatty acids (**6a–c**). They have shown high efficacy by improving transfection activity of lipoplexes *in vitro* and *in vivo* [63]. The cellular uptake of modified cationic liposomes increased by 20–30%, whereas cytotoxicity decreased by 20–60%. However, the structure of such esters may have a great impact on the transfection efficiency and liposome toxicity; this is why the choice of length and type of fatty acid residue plays an important role. The existing data shows that liposome size gradually decreases with an increasing hydrophilic-lipophilic balance. On average, liposome diameter is lower for those particles that contain lauric acid residues (**6a**) than the diameter of liposomes with stearic esters of stearic acid (**6b**), even with the same hydrophilic-lipophilic balance.



The length of the hydrophobic fragment may affect the stability and fluidity of liposomes as well. It has been shown that alkyl chains with 12 carbon atoms provide the best penetration into cells, in comparison with shorter (6–10 atoms) or longer (>14 atoms) chains [64]. Saccharose esters with short chains (lauric acid residues), whose hydrophilic-lipophilic balance is equal to 6, allow for the formation of liposomes, which provide high transfection efficiency for DNA plasmids and suppress tumor growth in mice [65].

There are a number of studies, which demonstrate

that an increase in transfection efficiency and genetic silencing in liver cells may be achieved even by simple conjugation of the glycoside with a DNA or RNA molecule. It has been shown that the targeted delivery of genetic material for HCV treatment, when such a modification is used, increases the penetration of nucleic acid into the cells by 10 times [66]. The conjugation of an antisense oligonucleotide with even one GalNAc residue (**7**) significantly increases the efficiency of the delivery of the bioactive molecule. In this case, lysine has been used as a spacer and branching agent.

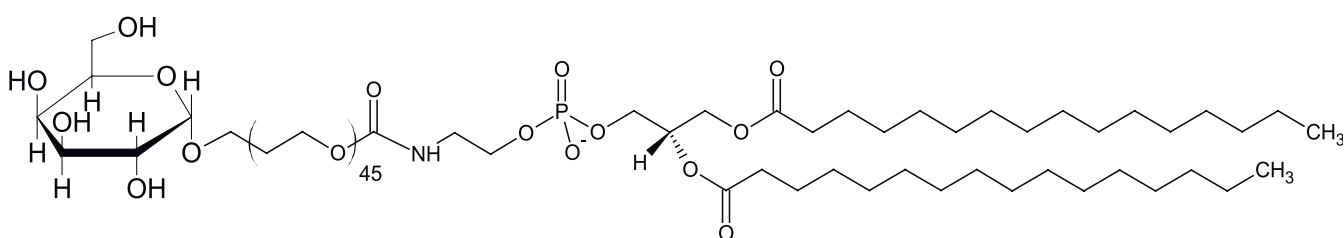


Apart from gene therapy agents, chemotherapy drugs have been quite successfully targeted into liver cells as well. In one study, cationic liposomes carrying doxorubicin were coated by D-galactose residues, at the stage of liposomal carrier formation. *In vitro* cytotoxicity experiments have shown that delivery to Huh-7 cells (human hepatocarcinoma) is selective; the cells have ASGP-R on the surface. The cytotoxicity is dose-dependent, increasing with a growing concentration of liposomes in the well of the plate [66].

In order to create another targeted anti-tumor drug, liposomes with encapsulated oxaliplatin have been engineered. Their surface was coated with lactobionic acid, a disaccharide polyhydroxy acid. The cytotoxic agent itself and the unmodified,

carrying liposomes were used as comparator drugs. Fluorescent labelling allowed to detect that addition of carbohydrate onto the liposomal surface led to three-fold growth in vesicle concentration in hepatocellular carcinoma cells [68]. Oxaliplatin carried by targeting liposomes had a stronger cytotoxic effect on these cancer cells, in comparison to a “simple” drug and unmodified liposomes.

Confocal microscopy with contrast organoid staining allows the accumulation of liposomes in targeted cells to be investigated. The conjugation of D-galactose residues with the surface of cationic liposomes via the amino group of the DSPE lipid (8) leads to a significantly better uptake by HepG2 hepatocytes [69].

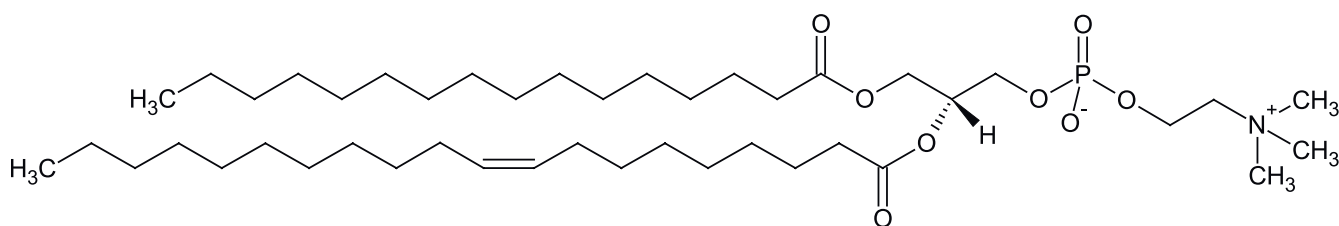


8

The co-incubation of cells with liposomes and specific conjugation inhibitors, such as indomethacin and chlorpromazine, has shown that adding these substances dramatically decreases the number of modified liposomes inside the cells [69]. It is known that chlorpromazine blocks clathrin-dependent endocytosis, and that indomethacin is caveolin-dependent. This is why the study confirms that penetration

of carbohydrate-containing particles into hepatocytes occurs via a clathrin-mediated mechanism, and also shows that caveolin-dependent uptake, too, plays an important role. The latter process is responsible for the uptake of the majority of complex microorganisms and viruses.

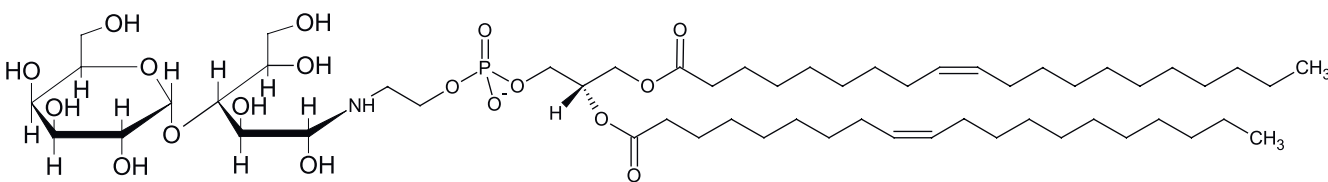
There has been research on cationic liposomes containing D-galactolipid and the POPC helper lipid (9) in various ratios [70].



9

In vitro experiments have shown that liposome uptake by Huh-7 cells increases with a growing amount of a carbohydrate-containing lipid in the lipid matrix. Carbohydrate-containing liposomes resulted in nearly two times better silencing of VEGF genes, responsible for the development of squamous

epithelium tumors, in comparison to “standard” cationic liposomes. The introduction of a glycolipid into the liposome, if that glycolipid has been obtained by a reaction between lactose and DOPE lipid (10), does not require any helper lipids for a successful exit from endosomes.

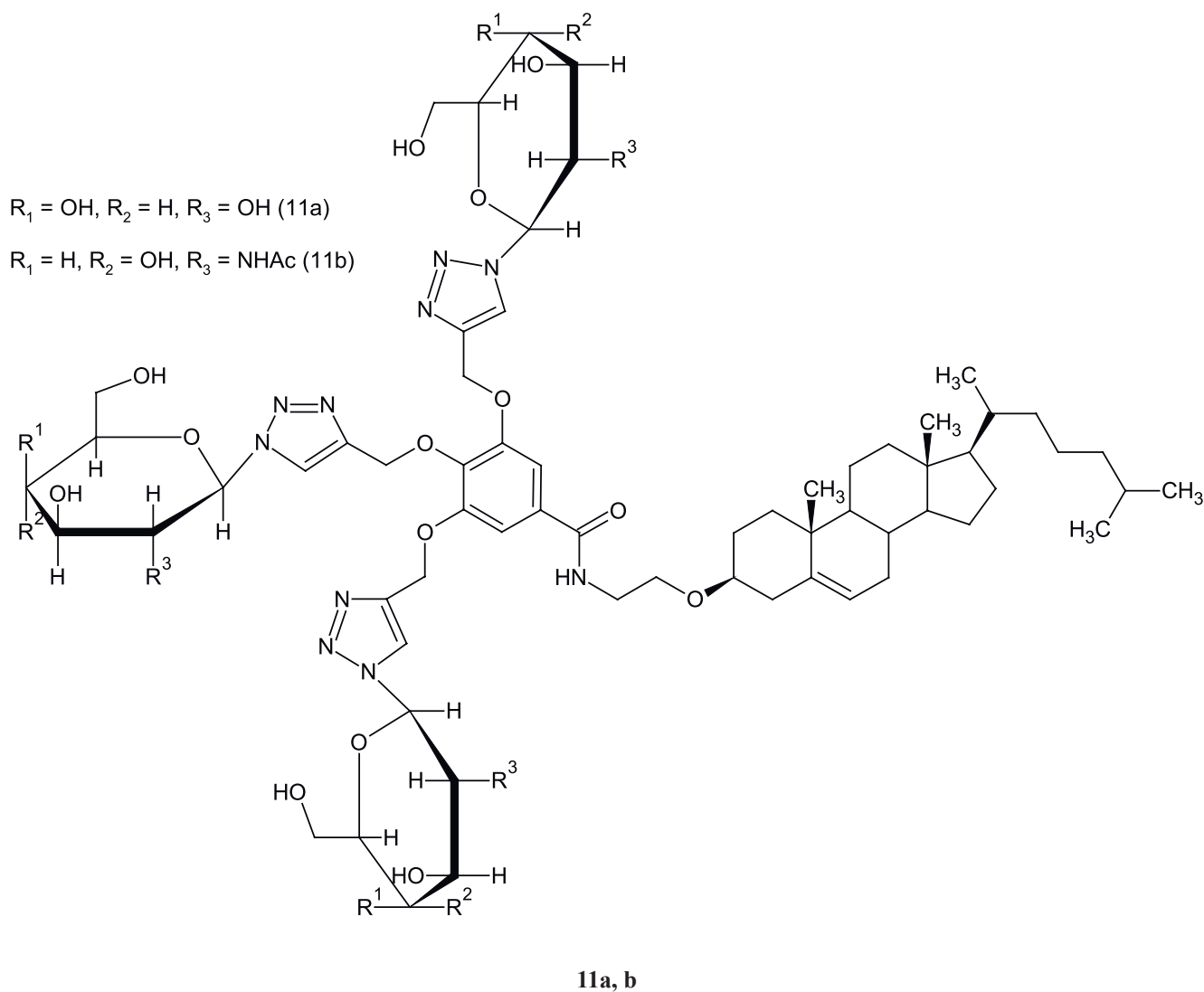


10

An *in vivo* pharmacokinetics study has shown that lipoplex uptake by liver cells occurs through a receptor-mediated mechanism, since just 5 minutes after the start of the experiment the majority of the modified complexes were found in the liver, whereas “standard” cationic liposomes remained in the plasma for the most part [70].

Another *in vivo* experiment with BALB/c mice has demonstrated the faster excretion of glycosylated liposomes, in comparison to cationic liposomes

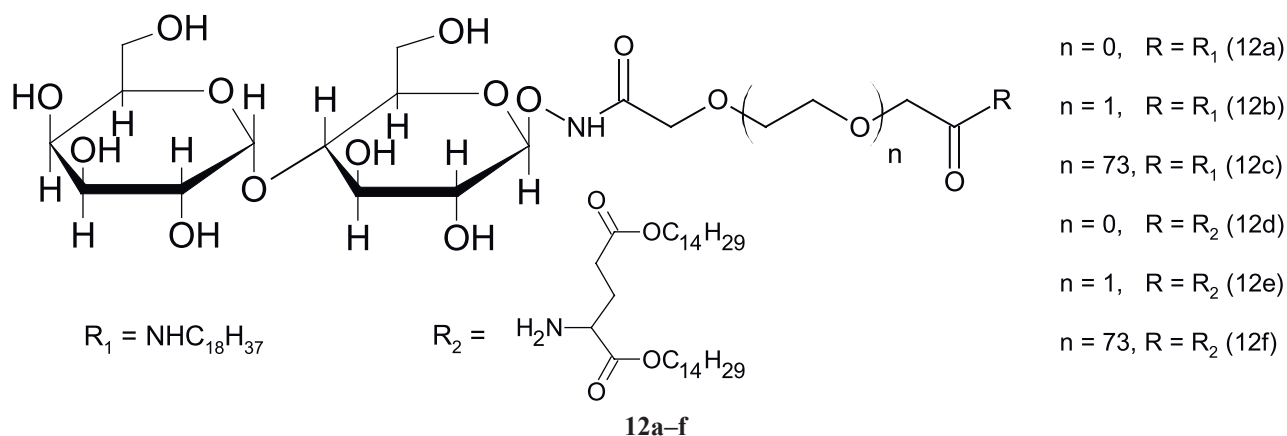
based on phosphatidylcholines and cholesterol [71]. For this study, two cholesterol-based glycoconjugates were synthesized; they contained D-galactose (**11a**) or N-acetyl-D-glucosamine (**11b**). In 20 minutes after the start of the experiment, the modified liposomes were almost absent in the blood, but were found in the liver, spleen, and kidneys. Additionally, liposomes with D-galactose residues on the surface reached the liver from the blood faster.



The synthesis of D-lactose based glycolipids has been reported; the molecules had spacers of various lengths, based on di-, tri-, and polyethylene glycol. These compounds (**12a–f**) were added to lipids, in the amount of 5%, during bilayer formation, after which the efficiency of binding of all three modified liposomes to the RCA1 receptor was evaluated [72].

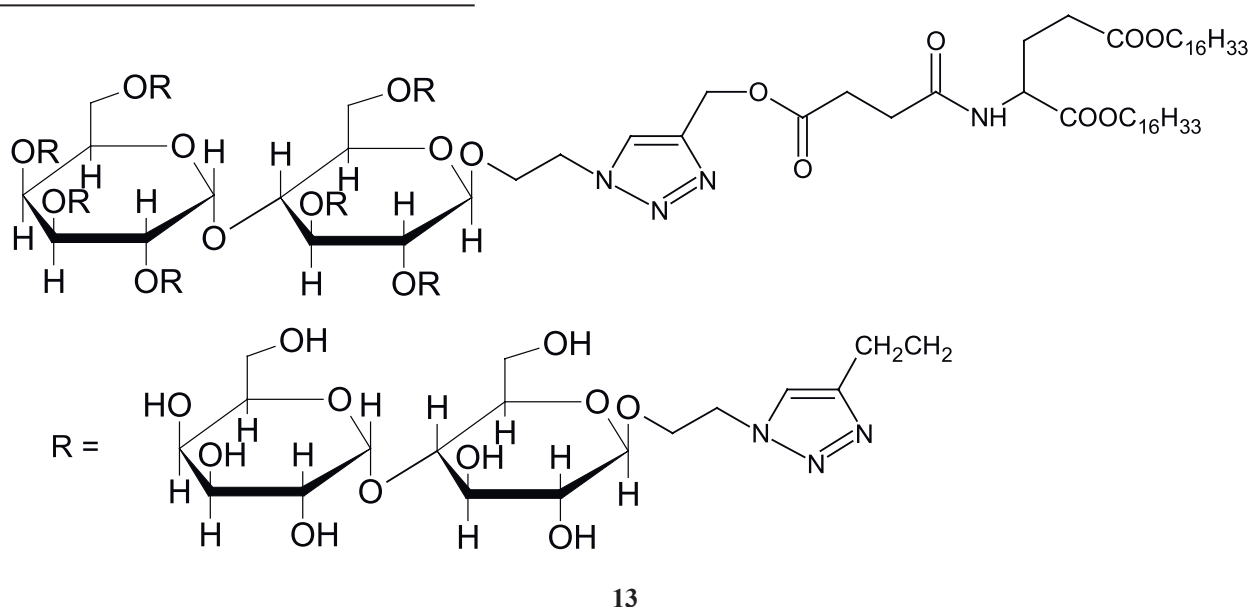
It was expected that the longest spacer, PEG (**12c, f**), would provide the highest affinity of the complexes, due to the longer distance between the vesicle surface and the carbohydrate fragment. However, the *in vitro*

results indicated that the most successful ligands were the ones with a triethylene glycol spacer (**12b, e**) [72]. The authors speculated that the PEG chains were too long, becoming a barrier between the receptors and the carbohydrate-containing ligands, thus preventing them from interaction. The same experiment was performed with a D-lactoside (**13**) containing 7 carbohydrate residues linked with a lipopeptide through a 1,2,3-triazole cycle [73]. The results confirmed that polyvalent glycolipids also have good potential for generating targeted, modified liposomes.



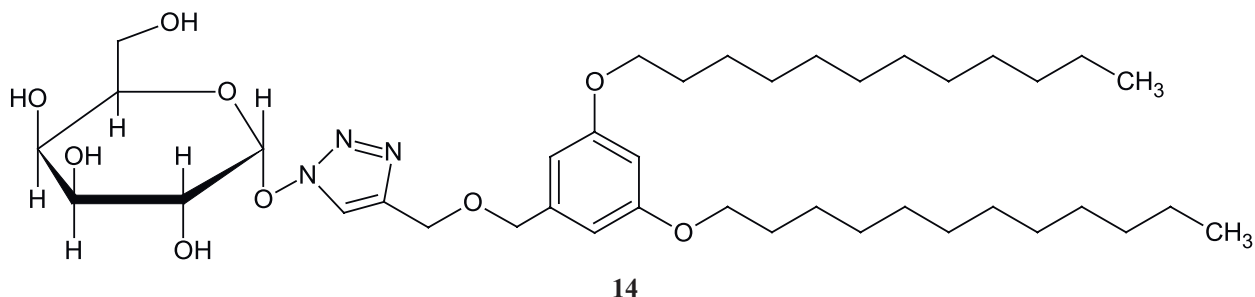
Glycolipid **13** was used as a ligand in the structure of a cationic liposome to study its effect on the transfection efficiency for the HepG2 cell line (human hepatocellular carcinoma). Almost the same glycolipid, but with a single

D-lactose residue, was used as a different ligand type. It was found that the branched ligand decreases transfection activity of the liposomal complex that carries the plasmid, due to steric hindrance and a shielding effect [74].



Studies of glycolipid-containing liposomes with a triazole cycle in the structure are presented in both Russian and foreign literature, indicating that such a link

between the lipophilic and the hydrophilic fragments is convenient [23, 75]. In addition, D-galactose derivative **14** contains a benzene ring as a linker [75].



Conclusions

Liposomal delivery systems are well suited for carrying anti-tumor drugs as well as nucleic acids. They allow us to design stable and effective medications

with fewer side effects, compared to “pure” active molecules. However, such delivery systems may cause toxic and immunological effects, due to unselective particle distribution in the body and the relatively large size (compared to other delivery systems), thus

activating a protective response. Apart from this, lipoplexes do not release their contents after entering the cell very effectively. It is necessary to achieve targeted drug delivery to the organ of interest by adding specific ligands to the liposomal surface. Glycolipids based on D-carbohydrates, when in the liposomes, facilitate penetration into liver cells by a receptor-mediated, clathrin-dependent endocytosis mechanism, which is activated upon contact of the carbohydrate-containing ligand fragment with the active site of the asialoglycoprotein receptor (ASGP-R). This can be addressed via the use of monovalent derivatives of carbohydrates as well as polyvalent glycoconjugates. Alterations in the ligand structure and the number of liposomal modifications can boost the therapeutic effect. The distance between the liposomal surface and the carbohydrate residue (spacer length), as well as the hydrophilic-lipophilic balance of the ligand molecule, have a great effect on affinity and the cellular response.

In summary, to ensure the minimal efficiency of the interaction between a modified particle and

asialoglycoprotein receptors, it is required to add 5% of a specific ligand to the liposome, and the distance between the liposomal surface and the carbohydrate residue should be approximately 10 Å. The presence of glycolipids in a cationic liposome accelerates penetration into the cell, not only due to the receptor-mediated mechanism, but also because of the physicochemical changes in the particle's surface. A number of studies have confirmed that modified liposomal complexes exit the endosomes more easily than "standard" cationic liposomes; we can speculate that glycolipids play a helping role as well. Carbohydrate-containing liposomes are able to effectively deliver both genetic material and cytotoxic drugs into target cells, indicating that it is possible to use such compositions against a wide range of liver diseases.

Acknowledgments

This work was carried out with the financial support of the Russian Foundation for Basic Research (RFBR), projects No. 17-04-01141 and No. 19-04-00775.

The authors declare no conflict of interest.

References:

1. Farazi P.A., DePinho R.A. Hepatocellular carcinoma pathogenesis: From genes to environment. *Nat. Rev.* 2006;6:674-687. <https://doi.org/10.1038/nrc1934>
2. Llovet J.M., Burroughs A., Bruix J. Hepatocellular carcinoma. *Lancet*. 2003;362:1907-1917. [https://doi.org/10.1016/S0140-6736\(03\)14964-1](https://doi.org/10.1016/S0140-6736(03)14964-1)
3. Lavanchy D. Hepatitis B virus epidemiology, disease burden, treatment, and current and emerging prevention and control measures. *J. Viral Hepat.* 2004;11:97-107. <https://doi.org/10.1046/j.1365-2893.2003.00487.x>
4. Jong Y.P. De, Rice C.M., Ploss A. Editorial evaluation of combination therapy against hepatitis C virus infection in human liver chimeric mice. *J. Hepatol.* 2011;54(5):848-850. <https://doi.org/10.1016/j.jhep.2010.09.034>
5. Shulla A., Randall G. Hepatitis C virus-host interactions. In: Hepatitis C Virus I. / T. Miyamura, S.M. Lemon, C.M. Walker, T. Wakita (eds). Springer Japan, 2016; pp. 197-233. <https://doi.org/10.1007/978-4-431-56098-2> DOI
6. Eisenberg C., Seta N., Appel M., Feldmann G. Asialoglycoprotein receptor in human isolated hepatocytes from normal liver and its apparent increase in liver with histological alterations. *J. Hepatol.* 1991;13:305-309. [http://dx.doi.org/10.1016/0168-8278\(91\)90073-K](http://dx.doi.org/10.1016/0168-8278(91)90073-K)
7. Poelstra K., Prakash J., Beljaars L. Drug targeting to the diseased liver. *J. Control. Release*. 2012;161(2):188-197. <https://doi.org/10.1016/j.jconrel.2012.02.011>
8. Grewal P.K. The Ashwell-Morell Receptor. In: *Methods in Enzymology*. California: Elsevier Inc., 2010. Iss.1; pp. 223-241. [https://doi.org/10.1016/S0076-6879\(10\)79013-3](https://doi.org/10.1016/S0076-6879(10)79013-3)
9. Ashwell G., Harford J. Carbohydrate-specific receptors of the liver. *Annu. Rev. Biochem.* 1982;51(2):531-554. <https://doi.org/10.1146/annurev.bi.51.070182.002531>
10. Hubbard A.L., Stukenbrok H. An electron microscope autoradiographic study of the carbohydrate recognition systems in rat liver. *J. Cell. Biol.* 1979;83:65-81. <https://doi.org/10.1083/jcb.83.1.65>
11. Hardy M.R., Townsend R.R., Parkhurst S.M., Lee Y.C. Different modes of ligand binding to the hepatic galactose/N-acetylgalactosamine lectin on the surface of rabbit hepatocytes. *Biochemistry*. 1985;24:22-28. <https://doi.org/10.1021/bi00322a004>
12. Dotzauer A., Gebhardt U., Bieback K., Göttke U., Kracke A., Mages J., Lemon S.M., Vallbracht A. Hepatitis A virus-specific immunoglobulin A mediates infection of hepatocytes with hepatitis A virus via the asialoglycoprotein receptor. *J. Virol.* 2002;74(23):10950-10957. <https://doi.org/10.1128/jvi.74.23.10950-10957.2000>
13. Treichel U., Meyer zum Büschenfelde K.H., Stockert R.J., Poralla T. The asialoglycoprotein receptor mediates hepatic binding and uptake of natural hepatitis B virus particles derived from viraemic carriers. *J. Gen. Virol.* 1994;75(11):3021-3029. <https://doi.org/10.1099/0022-1317-75-11-3021>
14. Becker S., Spiess M., Klenk H.D. The asialoglycoprotein receptor is a potential liver-specific receptor for Marburg virus. *J. Gen. Virol.* 1995;76(2):393-399. <https://doi.org/10.1099/0022-1317-76-2-393>
15. Treichel U., Meyer zum Büschenfelde K.H., Dienes H.P., Gerken G. Receptor-mediated entry of hepatitis B virus particles into liver cells. *Arch. Virol.* 1997;142(3):493-498. <https://doi.org/10.1007/s007050050095>
16. Weigel P.H., Yik J.H.N. Glycans as endocytosis signals: the cases of the asialoglycoprotein and hyaluronan/chondroitin sulfate receptors. *Biochim. Biophys. Acta*. 2002;1572:341-363. <https://doi.org/10.1109/vetecs.2000.851386>
17. Cummings R.D., McEver R.P. C-type Lectins. *Essentials of Glycobiology*. NY: Cold Spring Harbor Laboratory Press, 2009. Iss. 2: 784 p.
18. Bischoffs J., Lodish H.F. Two asialoglycoprotein receptor polypeptides in human hepatoma cells. *J. Biol. Chem.* 1987;262(24):11825-11832.
19. Huang X., Leroux J.-C., Castagner B. Well-defined multivalent ligands for hepatocytes targeting via asialoglycoprotein receptor. *Bioconjug. Chem.* 2017;28(2):283-295. <https://doi.org/10.1021/acs.bioconjchem.6b00651>
20. Henis Y.I., Katzir Z., Shia M.A., Lodish H.F.

Oligomeric structure of the human asialoglycoprotein receptor: Nature and stoichiometry of mutual complexes containing H1 and H2 polypeptides assessed by fluorescence photobleaching recovery. *J. Cell Biol.* 1990;111(4):1409-1418. <https://doi.org/10.1083/jcb.111.4.1409>

21. McAbee D.D., Jiang X., Walsh K.B. Lactoferrin binding to the rat asialoglycoprotein receptor requires the receptor's lectin properties. *Biochem. J.* 2000;348:113-117. <https://doi.org/10.1042/0264-6021:3480113>

22. Weis W.I., Taylor M.E., Drickamer K. The C-type lectin superfamily in the immune system. *Immunol. Rev.* 1998;163:19-34. <https://doi.org/10.1111/j.1600-065X.1998.tb01185.x>

23. Shuina E.D., Shchelick I.S., Sebyakin Yu.L. Synthesis and properties of neoglycolipids based on 2-amino-2-hydroxymethylpropane-1,3-diol. *Tonkie Khim. Tekhnol.* = *Fine Chem. Technol.* 2017;12(4):65-74 (in Russ.). <https://doi.org/10.32362/2410-6593-2017-12-4-65-74>

24. Kawakami S., Hashida M. Glycosylation-mediated targeting of carriers. *J. Control. Release.* 2014;190:542-555. <https://doi.org/10.1016/j.jconrel.2014.06.001>

25. Digiacomo L., Cardarelli F., Pozzi D., Palchetti S., Digman M.A., Gratton E., Capriotti A.L., Mahmoudi M., Caracciolo G. An apolipoprotein-enriched biomolecular corona switches the cellular uptake mechanism and trafficking pathway of lipid nanoparticles. *Nanoscale.* 2017;9(44):17254-17262. <https://doi.org/10.1039/c7nr06437c>

26. Futter C.E., Pearce A., Hewlett L.J., Hopkins C.R. Multivesicular endosomes containing internalized EGF-EGF receptor complexes mature and then fuse directly with lysosomes. *J. Cell Biol.* 1996;132(6):1011-1023. <https://doi.org/10.1083/jcb.132.6.1011>

27. Luzio J.P., Rous B.A., Bright N.A., Pryor P.R., Mullock B.M., Piper R.C. Lysosome-endosome fusion and lysosome biogenesis. *J. Cell Sci.* 2000;113:1515-1524.

28. Banizs A.B., Huang T., Nakamoto R.K., Shi W. Endocytosis pathways of endothelial cell derived exosomes. *Mol. Pharm.* 2018;15(12):5585-5590. <https://doi.org/10.1021/acs.molpharmaceut.8b00765>

29. Douam F., Lavillette D., Cosset F.L. The mechanism of HCV entry into host cells. *Prog. Mol. Biol. Transl. Sci.* 2015;129:63-107. <https://doi.org/10.1016/bs.pmbts.2014.10.003>

30. Kawasaki T., Ashwell G. Carbohydrate structure of glycopeptides isolated from an hepatic membrane-binding protein specific for asialoglycoproteins. *J. Biol. Chem.* 1976;251(17):5292-5299.

31. Weis W.I., Drickamer K., Hendrickson W.A. Structure of a C-type mannose-binding protein complexed with an oligosaccharide. *Nature.* 1992;360:127-134. <https://doi.org/10.1038/360127a0>

32. Drickamer K., Mamon J.F., Binns G., Leung J.O. Primary structure of the rat liver asialoglycoprotein receptor. Structural evidence for multiple polypeptide species. *J. Biol. Chem.* 1984;259(2):770-778.

33. Hong W., Le A. Van, Doyle D. Identification and characterization of a murine receptor for galactose-terminated glycoproteins. *Hepatology.* 1988;8(3):553-558. <https://doi.org/10.1002/hep.1840080320>

34. Guan M., Zhou Yi, Zhu Q-L., Liu Y. N-Trimethyl chitosan nanoparticle-encapsulated lactosyl-norcantharidin for liver cancer therapy with high targeting efficacy. *Nanomedicine Nanotechnology, Biol. Med.* 2012;8(7):1172-1181. <https://doi.org/10.1016/j.nano.2012.01.009>

35. D'Souza A.A., Devarajan P.V. Asialoglycoprotein receptor mediated hepatocyte targeting – Strategies and applications. *J. Control. Release.* 2015;203:126-139. <https://doi.org/10.1016/j.jconrel.2015.02.022>

36. Yoshino K., Nakamura K., Terajima Y., Kurita A. Comparative studies of irinotecan-loaded polyethylene glycol-modified liposomes prepared using different PEG-modification methods. *Biochim. Biophys. Acta – Biomembr.* 2012;1818(11):2901-2907. <https://doi.org/10.1016/j.bbamem.2012.07.011>

37. Franssen E.J.F., Jansen R.W., Vaalburg M., Meijer D.K. Hepatic and intrahepatic targeting of an anti-inflammatory agent with human serum albumin and neoglycoproteins as carrier molecules. *Biochem. Pharmacol.* 1993;45(6):1215-1226. [https://doi.org/10.1016/0006-2952\(93\)90273-Y](https://doi.org/10.1016/0006-2952(93)90273-Y)

38. Rensen P.C.N., Slidregt L.A., Fems M., Kieviet E., van Rossenberg S.M., van Leeuwen S.H., van Berkel T.J., Biessen E.A. Determination of the upper size limit for uptake and processing of ligands by the asialoglycoprotein receptor on hepatocytes in vitro and in vivo. *J. Biol. Chem.* 2001;276(40):37577-37584. <https://doi.org/10.1074/jbc.M101786200>

39. Engel A., Chatterjee S.K., Al-Arifi A., Reimann D., Langner J., Nuhn P. Influence of spacer length on interaction of mannosylated liposomes with human phagocytic cells. *Pharm. Res.* 2003;20(1):51-57. <https://doi.org/10.1023/A:1022294624256>

40. Makky A., Michel J-P., Maillaed P., Rosilio V. Biomimetic liposomes and planar supported bilayers for the assessment of glycodendrimeric porphyrins interaction with an immobilized lectin. *Biochim. Biophys. Acta – Biomembr.* 2011;1808(3):656-666. <https://doi.org/10.1016/j.bbamem.2010.11.028>

41. Sundler R. Studies on the effective size of phospholipid headgroups in bilayer vesicles using lectin-glycolipid interaction as a steric probe. *Biochim. Biophys. Acta.* 1984;771:59-67. [https://doi.org/10.1016/0005-2736\(84\)90110-X](https://doi.org/10.1016/0005-2736(84)90110-X)

42. Sasaki A., Murahashi N., Yamada H., Morikawa A. Syntheses of novel galactosyl ligands for liposomes and their accumulation in the rat liver. *Biol. Pharm. Bull.* 1994;17(5):680-685. <https://doi.org/10.1248/bpb.17.680>

43. Yoshioka H., Ohmura T., Hasegawa M., Hirota S., Makino M., Kamiya M. Synthesis of galactose derivatives that render lectin-induced agglutinating ability to liposomes. *J. Pharm. Sci.* 1993;82(3):273-275. <https://doi.org/10.1002/jps.2600820311>

44. Shimada K., Kamps J.A., Regts J., Ikeda K., Shiozawa T., Hirota S., Scherphof G.L. Biodistribution of liposomes containing synthetic galactose-terminated diacylglycerol-poly(ethyleneglycol) s. *Biochim. Biophys. Acta – Biomembr.* 1997;1326(2):329-341. [https://doi.org/10.1016/S0005-2736\(97\)00036-9](https://doi.org/10.1016/S0005-2736(97)00036-9)

45. Valentijn A.R.P.M., van der Marel G.A., Slidregt L., van Berkel T. Solid-phase synthesis of lysine-based cluster galactosides receptor with high affinity for the asialoglycoprotein receptor. *Tetrahedron.* 1997;53(2):759-770. [https://doi.org/10.1016/S0040-4020\(96\)01018-6](https://doi.org/10.1016/S0040-4020(96)01018-6)

46. Biessen E.A.L., Broxterman H., van Boom J.H., van Berkel T.J. The cholesterol derivative of a triantennary galactoside with high affinity for the hepatic asialoglycoprotein receptor: A potent cholesterol lowering agent. *J. Med. Chem.* 1995;38:1846-1852. <https://doi.org/10.1021/jm00011a003>

47. Singh M., Ariatti M. Targeted gene delivery into HepG2 cells using complexes containing DNA, cationized asialoorosomucoid and activated cationic liposomes. *J. Control. Release.* 2003;92(3):383-394. [https://doi.org/10.1016/S0168-3659\(03\)00360-2](https://doi.org/10.1016/S0168-3659(03)00360-2)

48. Nosova A.S., Koloskova O.O., Shilovskiy I.P., Sebyakin Yu.L., Khaitov M.R. Lactose-based glycoconjugates with variable spacers for design of liver-targeted liposomes. *Biomeditsinskaya khimiya* [Biomedical Chemistry]. 2017;63(5):467-471 (in Russ.) <https://dx.doi.org/10.18097/PBMC20176305467>
49. Prakash T.P., Yu J., Migawa M.T., Kinberger G.A., Wan W.B., Østergaard M.E., Carty R.L., Vasquez G. Comprehensive structure activity relationship of triantennary N-acetylgalactosamine conjugated antisense oligonucleotides for targeted delivery to hepatocytes. *J. Med. Chem.* 2016; 59(6):2718-2733. <https://doi.org/10.1021/acs.jmedchem.5b01948>
50. Mukthavaram R., Marepally S., Venkata M.Y., Vegi G.N., Sistla R., Chaudhuri A. Cationic glycolipids with cyclic and open galactose head groups for the selective targeting of genes to mouse liver. *Biomaterials*. 2009;30(12):2369-2384. <https://doi.org/10.1016/j.biomaterials.2008.12.074>
51. Sun P., HeY., Lin M., Zhao Y. Glyco-regioisomerism effect on lectin-binding and cell-uptake pathway of glycopolymer-containing nanoparticles. *ACS Macro Lett.* 2014;3:96-101. <https://doi.org/10.1021/mz400577p>
52. Fukuda I., Mochizuki S., Sakurai K. Macrophage-targeting gene delivery using a micelle composed of mannose-modified lipid with triazole ring and dioleoyl trimethylammonium propane. *Biomed. Res. Int.* 2015;(10):1-8. <https://doi.org/10.1155/2015/350580>
53. Monestier M., Charbonnier P., Gateau C., Cuillel M., Robert F., Lebrun C., Mintz E., Renaudet O., Delangle P. ASGPR-mediated uptake of multivalent glycoconjugates for drug delivery in hepatocytes. *ChemBioChem*. 2016;17:590-594. <https://doi.org/10.1002/cbic.201600023>
54. Grant C.W.M., Peters M.W. Lectin-membrane interactions information from model systems. *Biochim. Biophys. Acta – Rev. Biomembr.* 1984;779(4):403-422. [https://doi.org/10.1016/0304-4157\(84\)90018-2](https://doi.org/10.1016/0304-4157(84)90018-2)
55. Koloskova O.O., Budanova U.A., Shchelik I.C., Shilovskii I.P., Khaitov M.R., Sebyakin Y.L. Examination the properties of lipopeptide liposomes modified by glycoconjugates. *Nano Hybrids Compos.* 2017;13:82-88. <https://doi.org/10.4028/www.scientific.net/NHC.13.82>
56. Slidregt L.A.J.M., Rensen P.C., Rump E.T., van Santbrink P.J., Bijsterbosch M.K., Valentijn A.R., van der Marel G.A., van Boom J.H., van Berkel T.J., Biessen E.A. Design and synthesis of novel amphiphilic dendritic galactosides for selective targeting of liposomes to the hepatic asialoglycoprotein receptor. *J. Med. Chem.* 1999;42:609-618. <https://doi.org/10.1021/jm981078h>
57. Engel A., Chatterjee S.K., Al-Arifi A., Nuhn P. Influence of spacer length on the agglutination of glycolipid-incorporated liposomes by ConA as model membrane. *J. Pharm. Sci.* 2003;92(11):2229-2235. <https://doi.org/10.1002/jps.10481>
58. Narang A.S., Thoma L., Miller D.D., Mahato R.I. Cationic lipids with increased DNA binding affinity for nonviral gene transfer in dividing and nondividing cells. *Bioconjug. Chem.* 2005;16(1):156-168. <https://doi.org/10.1021/bc049818q>
59. Felgner J.H., Kumar R., Sridhar C.N., Wheeler C.J., Tsai Y.J., Border R., Ramsey P., Martin M., Felgner P.L. Enhanced gene delivery and mechanism studies with a novel series of cationic lipid formulations. *J. Biol. Chem.* 1994;269(4):2550-2561.
60. Maiti B., Kamra M., Karande A.A., Bhattacharya S. Transfection efficiencies of α -tocopherylated cationic gemini lipids with hydroxyethyl bearing headgroups under high serum conditions. *Org. Biomol. Chem.* 2018;11:1983-1993. <https://doi.org/10.1039/c7ob02835k>
61. Li H., Hao Y., Wang N., Wang L., Jia S., Wang Y., Yang L., Zhang Y., Zhang Z. DOTAP functionalizing single-walled carbon nanotubes as non-viral vectors for efficient intracellular siRNA delivery. *Drug. Deliv.* 2016;23(3):840-848. <https://doi.org/10.3109/10717544.2014.919542>
62. Berchel M., Akhter S., Berthe W., Gonçalves C., Dubuisson M., Pichon C., Jaffrès P.-A., Midoux P. Synthesis of α -amino-lipophosphonates as cationic lipids or co-lipids for DNA transfection in dendritic cells. *J. Mater. Chem. B.* 2017;5(33):6869-6881. <https://doi.org/10.1039/c7tb01080j>
63. Zhao Y., Zhu J., Zhou H., Guo X., Tian T., Cui S., Zhen Y., Zhang S., Xu Y. Sucrose ester based cationic liposomes as effective non-viral gene vectors for gene delivery. *Colloids Surfaces B Biointerfaces.* 2016;145:454-461. <https://doi.org/10.1016/j.colsurfb.2016.05.033>
64. Chesnoy S., Huang L. Structure and function of lipid-DNA complexes for gene delivery. *Annu. Rev. Biophys. Biomol. Struct.* 2000;29:27-47. <https://doi.org/10.1146/annurev.biophys.29.1.27>
65. Zhao Y., Liu A., Du Y., Cao Y., Zhang E., Zhou Q., Hai H., Zhen Y., Zhang S. Effects of sucrose ester structures on liposome-mediated gene delivery. *Acta Biomater.* 2018;72:278-286. <https://doi.org/10.1016/j.actbio.2018.03.031>
66. Kinberger G.A., Prakash T.P., Yu J., Vasquez G., Low A., Chappell A., Schmidt K., Murray H.M., Gaus H., Swayze E.E., Seth P.P. Conjugation of mono and di-GalNAc sugars enhances the potency of antisense oligonucleotides via ASGR mediated delivery to hepatocytes. *Bioorg. Med. Chem. Lett.* 2016;26(15):3690-3693. <https://doi.org/10.1016/j.bmcl.2016.05.084>
67. Oh H.R., Jo H.Y., Park J.S., Kim D.E., Cho J.Y., Kim P.H., Kim K.S. Galactosylated liposomes for targeted co-delivery of doxorubicin/vimentin siRNA to hepatocellular carcinoma. *Nanomaterials.* 2016;6(141). <https://doi.org/10.3390/nano6080141>
68. Bansal D., Yadav K., Pandey V., Ganeshpurkar A., Agnihotri A., Dubey N. Lactobionic acid coupled liposomes: An innovative strategy for targeting hepatocellular carcinoma. *Drug Deliv.* 2016;23(1):140-146. <https://doi.org/10.3109/10717544.2014.907373>
69. Liu X., Han M., Xu J., Geng S., Zhang Y., Ye X., Gou J., Yin T., He H., Tang X. Asialoglycoprotein receptor-targeted liposomes loaded with a norcantharimide derivative for hepatocyte-selective targeting. *Int. J. Pharm.* 2017;520(1-2):98-110. <https://doi.org/10.1016/j.ijpharm.2017.02.010>
70. Sonoike S.S., Ueda T., Fujiwara K., Kuwabara K., Yano J. Galactose-modified cationic liposomes as a liver-targeting delivery system for small interfering RNA. *Biol. Pharm. Bull.* 2011;34(8):1338-1342. <https://doi.org/10.1248/bpb.34.1338>
71. De Silva A.T.M., Maia A.L.C., de Oliveira Silva J., de Barros A.L.B., Soares D.C.F., de Magalhães M.T.Q., José Alves R., Ramaldes G.A. Synthesis of cholesterol-based neoglycoconjugates and their use in the preparation of liposomes for active liver targeting. *Carbohydr. Res.* 2018;465:52-57. <https://doi.org/10.1016/j.carres.2018.06.008>
72. Gur'eva L.Y., Bol'sheborodova A.K., Sebyakin Y.L. Design, synthesis, and properties of neoglycolipids based on ethylene glycoles conjugated with lactose as components of targeted delivery systems of biologically active compounds. *Russ. J. Org. Chem.* 2012;48(8):1047-1054. <https://doi.org/10.1134/S1070428012080039>

73. Budanova U.A., Shchelik I., Koloskova O., Sebyakin Y.L. Multivalent glycoconjugate as the vector of target delivery of bioactive compounds. *Mendeleev Commun.* 2016;26(3):205-206. <https://doi.org/10.1016/j.mencom.2016.04.008>

74. Koloskova O.O., Nosova A.S., Shchelik I.S., Shilovskiy I., Sebyakin Y.L., Khaitov M.R. Liver-targeted delivery of nucleic acid by liposomes modified with a

glycoconjugate. *Mendeleev Commun.* 2017;27(6):626-627. <http://dx.doi.org/10.1016/j.mencom.2017.11.030>

75. Sakashita M., Mochizuki S., Sakurai K. Hepatocyte-targeting gene delivery using a lipoplex composed of galactose-modified aromatic lipid synthesized with click chemistry. *Bioorg. Med. Chem.* 2014;22(19):5212-5219. <https://doi.org/10.1016/j.bmc.2014.08.012>

About the authors:

Anastasiya S. Nosova, Master of the N.A. Preobrazhensky Chair of Chemistry and Technology of Biologically Active Compounds, Medical and Organic Chemistry, M.V. Lomonosov Institute of Fine Chemical Technologies, MIREA – Russian Technological University (86, Vernadskogo pr., Moscow, 119571, Russia). <https://orcid.org/0000-0002-4905-8911>

Ulyana A. Budanova, Cand. of Sci. (Chemistry), Assistant of Professor of the N.A. Preobrazhensky Chair of Chemistry and Technology of Biologically Active Compounds, Medical and Organic Chemistry, M.V. Lomonosov Institute of Fine Chemical Technologies, MIREA – Russian Technological University (86, Vernadskogo pr., Moscow, 119571, Russia). Scopus Author ID 14622352500, ResearcherID E-1659-2014, <https://orcid.org/0000-0003-1702-9435>

Yury L. Sebyakin, Dr. of Sci. (Chemistry), Professor, Professor of the N.A. Preobrazhensky Chair of Chemistry and Technology of Biologically Active Compounds, Medical and Organic Chemistry, M.V. Lomonosov Institute of Fine Chemical Technologies, MIREA – Russian Technological University (86, Vernadskogo pr., Moscow, 119571, Russia). Scopus Author ID 6701455145, ResearcherID T-2835-2019, <https://orcid.org/0000-0002-7027-378X>

Об авторах:

Носова Анастасия Сергеевна, магистр кафедры химии и технологии биологически активных соединений, медицинской и органической химии им. Н.А. Преображенского Института тонких химических технологий имени М.В. Ломоносова ФГБОУ ВО «МИРЭА – Российский технологический университет» (Россия, 119571, Москва, пр. Вернадского, д. 86). <https://orcid.org/0000-0002-4905-8911>

Буданова Ульяна Александровна, кандидат химических наук, ассистент кафедры химии и технологии биологически активных соединений, медицинской и органической химии им. Н.А. Преображенского Института тонких химических технологий имени М.В. Ломоносова ФГБОУ ВО «МИРЭА – Российский технологический университет» (Россия, 119571, Москва, пр. Вернадского, 86). Scopus Author ID 14622352500, ResearcherID E-1659-2014, <https://orcid.org/0000-0003-1702-9435>

Себякин Юрий Львович, доктор химических наук, профессор, профессор кафедры химии и технологии биологически активных соединений, медицинской и органической химии им. Н.А. Преображенского Института тонких химических технологий имени М.В. Ломоносова ФГБОУ ВО «МИРЭА – Российский технологический университет» (Россия, 119571, Москва, пр. Вернадского, 86). Scopus Author ID 6701455145, ResearcherID T-2835-2019, <https://orcid.org/0000-0002-7027-378X>

Submitted: August 28, 2019; Reviewed: September 25, 2019; Accepted: October 16, 2019.

Translated by R. Trikin